

## Access to Education 2002 (*pulling Apart 20*) (Kenya)

Statistics show wide disparities in respect of access to education across the provinces.

Table 3.8: Access to education 2002

Province	Gross enrolment rate, %		Pupil-teacher ratio		Drop out rates
	Primary	Secondary	Primary	Secondary	%
Nairobi	52.0	11.8	33.7	11.4	11.3
Central	106.0	37.7	32.2	16.2	7.1
Coast	71.0	14.4	35.7	15.7	11.8
Eastern	96.9	23.3	30.4	16.0	8.8
N.Eastern(urban)	17.8	4.5	43.8	19.3	12.6
Nyanza	94.0	23.5	32.7	17.8	6.8
Rift Valley	88.3	18.3	33.1	16.9	8.2
Western	93.3	25.1	34.1	17.2	6.9
<b>Kenya</b>	<b>87.6</b>	<b>22.2</b>	<b>32.9</b>	<b>16.5</b>	<b>8.1</b>

*Source: Ministry of Education, Statistics Division*

In Central Province the gross enrolment rates in primary school in 2000 was 106% compared to only 17.8% in North Eastern Province. The corresponding figures for secondary school for the two regions are 37.7% and 4.5%, respectively. There are also wide disparities in the pupil-teacher ratio at the provincial levels (*Pulling Apart 20*).

### Literacy by gender and region, % (Kenya)

Province	Literacy		No education at all	
	Female	Male	Female	Male
Nairobi	91.8	94.2	5.6	4.9
Central	91.1	94.4	2.6	1.5
Coast	65.6	88.2	29.6	10.0
Eastern	81.6	91.7	8.4	3.5
N. Eastern	<b>6.4</b>	<b>29.5</b>	<b>93.4</b>	<b>71.1</b>
Nyanza	79.8	89.4	7.1	1.8
Rift Valley	73.2	83.9	17.4	10.2
Western	77.4	84.4	9.0	3.4
Kenya	78.5	88.1	21.6	13.8

Source: 2003 Kenya Demographic and Health Survey

While 92% of women in Nairobi are literate only 6.4% are literate in North Eastern Province. For men, corresponding figures for Nairobi and North Eastern Province are 94.2% and 29.5% respectively (*pulling Apart 44*).

## Annual National Assessment Exams: KCPE AND KCSE (2003)

(Ali M.M.)

### PRIMARY SCHOOLS (2003)

KCPE results/2003 Top 100 students per province: Max possible score: 500

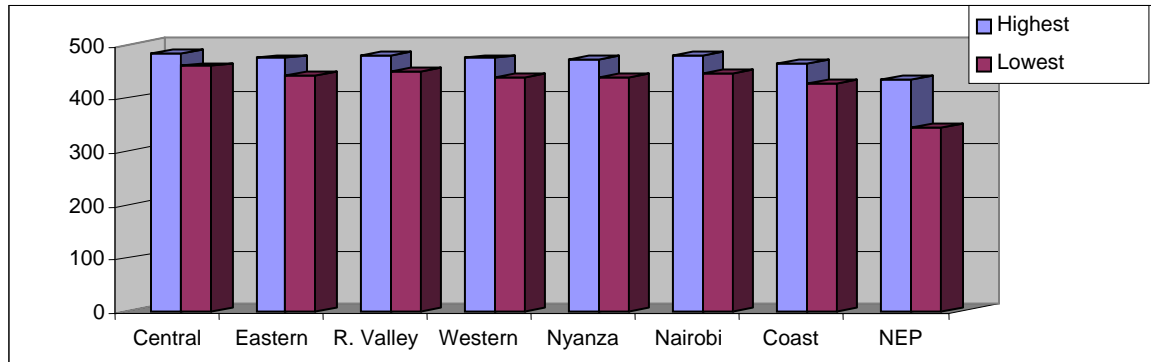
Province	High in 100 top	Low in 100 top	Boys	Girls
Central	482	458	67	33
Eastern	473	442	74	26
R. Valley	478	450	77	23
Western	473	436	70	30
Nyanza	472	436	85	15
Nairobi	479	446	47	53
Coast	463	427	69	31
NEP	<b>435</b>	<b>343</b>	<b>84</b>	<b>16</b>

*KCPE: Kenya certificate of primary education*

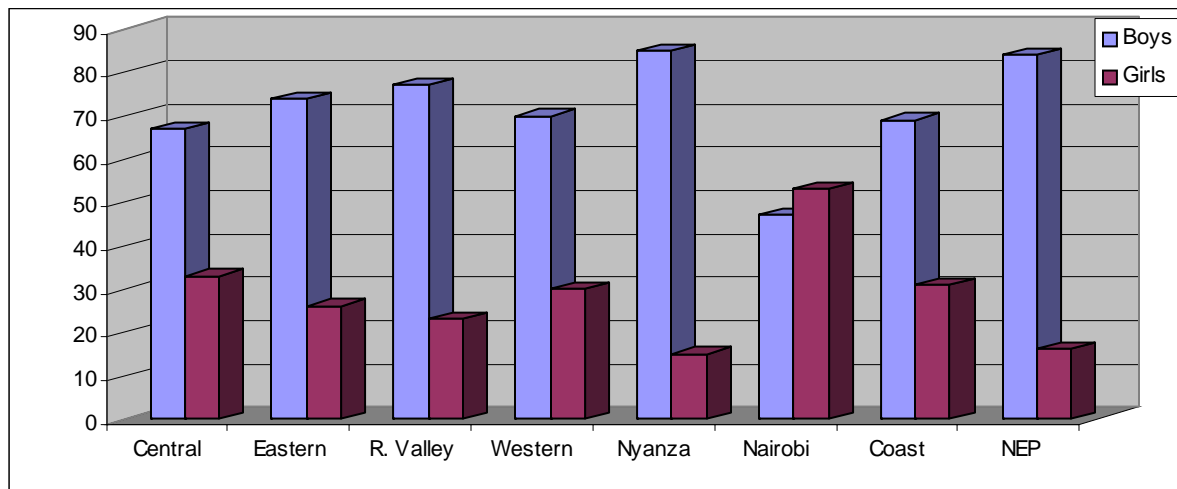
*KCSE: Kenya certificate of secondary education*

The best in NEP could not be ranked among the top 100 students in any other province (except coast).

*Highest and lowest among the top 100 students per Province*



*Girls Vs Boys*

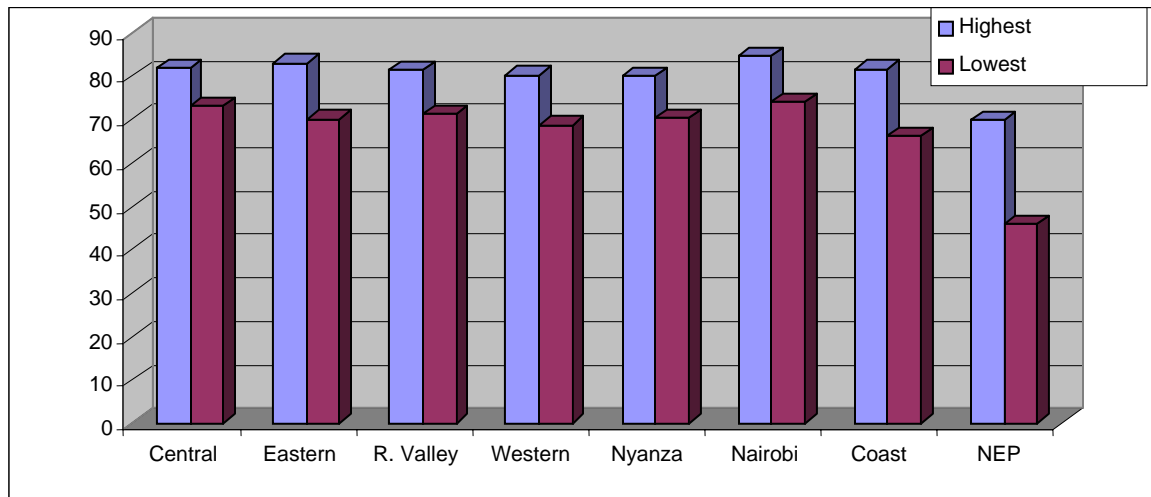


## SECONDARY SCHOOLS (2003)

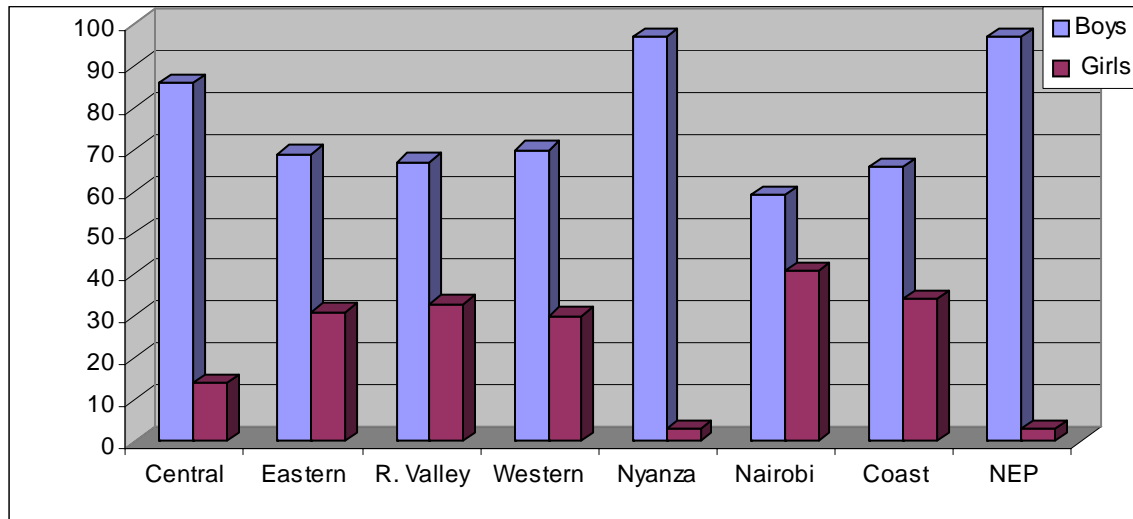
KCSE results top 100 students per province: %

Province	High in 100 top	Low in 100 top	Boys	Girls
Central	81.85	73	86	14
Eastern	82.99	70.1	69	31
R. Valley	81.28	71.43	67	33
Western	80.28	68.71	70	30
Nyanza	80	70.4	97	3
Nairobi	84.57	74	59	41
Coast	81.7	66.28	66	34
<b>NEP</b>	<b>69.74</b>	<b>46</b>	97	<b>3</b>

*Highest and Lowest among the top 100 students per province*



## Girls Vs Boys



## EA Standard Editorial june/6<sup>th</sup>

### NEP leads from below

---

Kenya's North Eastern Province has earned itself the dubious distinction of enrolling the least numbers of girls in primary schools in the whole world.

Unicef, in fact, says that the number of boys enrolled in NEP's primary schools is double that of the girls and this despite the fact that education at this level is free.

But that is not the whole story. The Provincial Director of Education, Mr Elly Osiemo, was quoted yesterday as saying that 80 per cent of NEP's school age children, that is some 200,000 of them, are out of school.

The foregoing compounds NEP's education problems because the province does not fare well in national examinations be it at the primary or secondary school level.

Who will lead the way in stemming this slide in the province's education standards?